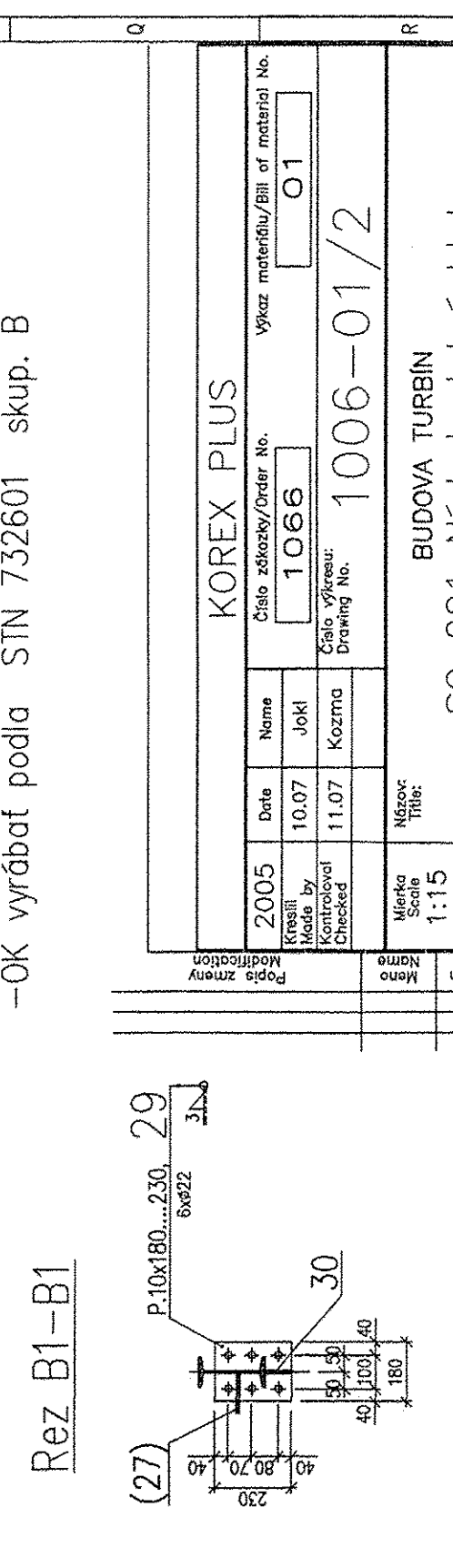
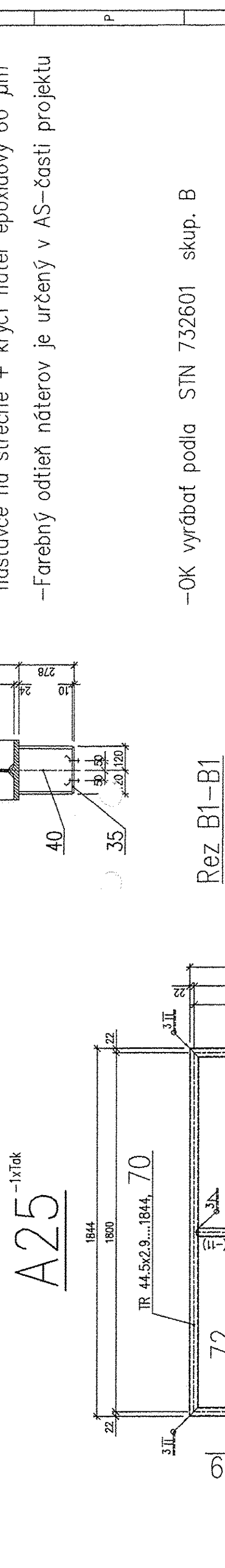
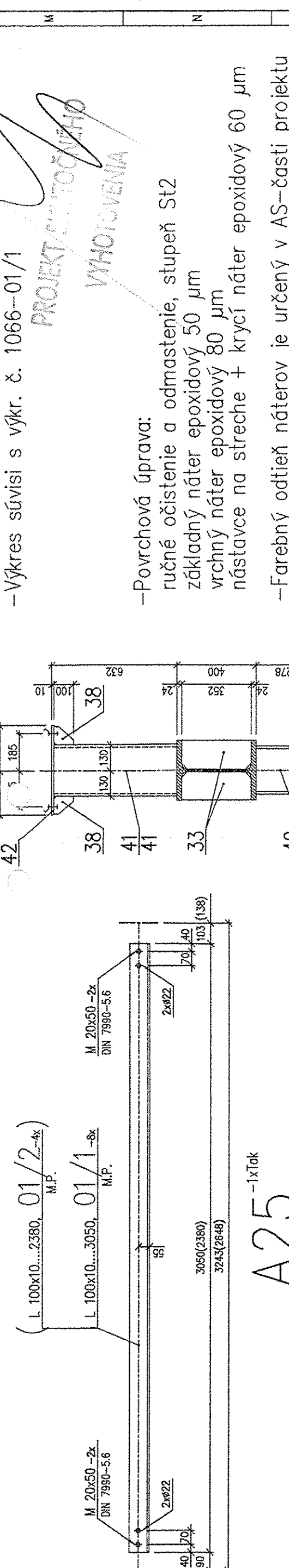


Technical drawing of a mechanical part, likely a valve or plug, showing a cross-section and a side view. The cross-section shows a central bore with a diameter of 33 mm. The side view shows a cylindrical body with a diameter of 44 mm and a total length of 195 mm. The drawing includes dimensions for the bore diameter (33), the outer diameter (44), the total length (195), and the length of the central bore (400). The drawing is labeled "OS RINBU" and "1975".

[illegible]